

RADON GAS

- The issue of radon gas in the United States is a growing concern. Radon is a radioactive gas you cannot see, smell or taste. It is produced naturally by the decay of uranium and radium elements found in the soil.
- The Saber Sump Pit can be installed solely for radon mitigation or used as a component in an effective drainage system.
- Radon gas is heavier than air. With the Saber Sump Pit installed at the lowest point, radon gas can be vented per EPA specifications.
- The Saber Sump Pit is internationally approved for its ability to trap radon gas before it enters your home or business.
- Radon collects inside the sealed Saber Sump Pit and is then extracted through a radon ventilation system.
- Example: Saber Sump Pit has reduced the radon gas level from 66.66 pCi/L to 1.4 pCi/L.



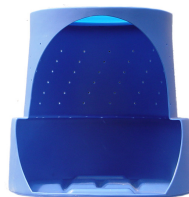
Radon, heavier than air, occupies sump pit.
Saber Sump Pit

WHY YOUR PROJECT SHOULD INCLUDE **Saber Sump Pit**

1. Unmatched versatility lets you tailor the system to meet your needs. Whether it is for radon or drainage.
2. Tested and proven in thousands of commercial and residential projects.
3. A guaranteed reduction in repair cost or warranty claims.
4. Built-in pump protection without the need of unstable makeshift supports.
5. Economical, easy to install, cutting-edge technology.
6. Ideally suited for retrofit, flood protection and sewer back-up purposes.
7. Restores essential drainage where conventional systems may have failed or do not exist.
8. Recommended and used by engineers and industry professionals.
9. Pre-emptive year round defense against poor drainage and expansive soils.
10. Out performs all other existing sump pits, basins and crocks.

Available in two configurations:

Twin Pump



Single Pump



Saber Sump Pit

Making the World A Drier & Safer Place



Drainage & Radon Solutions

Distributor Information

HYDROTECH
COATING SYSTEMS

Hydrotech Coating Systems
13 Sloop Rd.

Grand Isle, VT 05458

Phone: (802) 318-1808

Fax: (802) 372-4043

www.hydrotechcoatingsystems.com

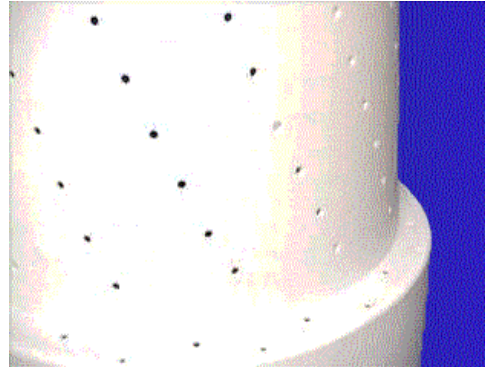
davedaigle@verizon.net

The Next Generation in Drainage

- The Saber Sump Pit and Saber Tank Extension are molded from high quality, impact resistant polyethylene. This tough, seamless, corrosion proof construction together with the system's innovative-patented design and proven capabilities has set the standard for the future in drainage.
- Poor drainage and expansive soils are a global concern. Annual repair costs to man made structures exceed 100 billion dollars in the United States alone. Saber Drainage Systems has targeted each area where conventional drainage methods have failed, identified related problems, and designed a solution.
- The Saber Sump Pit will not fail under soil shifting or ground heaving conditions.
- The Saber Sump Pit reduces soil moisture content because it is a subsurface drainage system.
- Dimensions; 18 inches across the top, 24 inches wide at the bottom (patented bell shape) and 24" inches tall.
- The Saber Sump Pit is like no other drainage system available today. It is efficient, affordable and guaranteed for life.

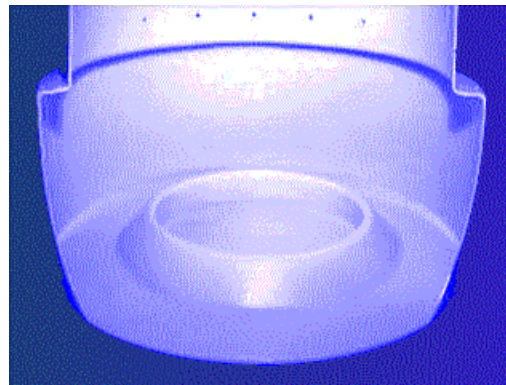
SABER TANK AND TIER

The perforated vertical tank face and tier allow previously trapped ground water to freely enter the system and alleviate any damaging conditions that may have formed. These engineered perforations create a natural well effect, which will eliminate hydrostatic pressure and guarantee a dry foundation.



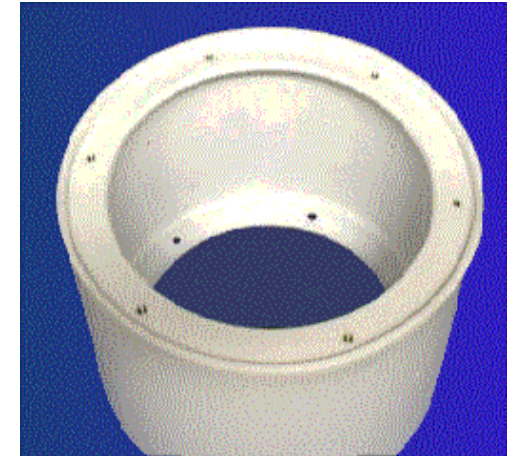
SABER PUMP PLATFORM

The built-in pump platform provides a stable base to protect the pump. The elevated outer wall localizes sediment accumulations and prevents debris from entering the pump intake.



SABER TANK EXTENTIONS

Modular tank extensions easily fasten with one or a series of extensions. The Saber Sump Pit can be installed at virtually any depth to maintain critical drainage line elevation requirements. This feature is ideally suited for use in commercial applications. The extensions are 12" top to bottom.



SABER RECESSED LID

The childproof recessed lid is bolted to the sump pit or tank extension. This lid provides a clean, flush-mounted finish with neoprene gaskets to properly seal the unit.

